

# Draw Rests II

A note tells how long a musical sound should last.  
There are also rests, to tell how long a silence should last.

There is a whole note (semibreve) and a whole note (semibreve) rest that also serves as a bar rest – indicating silence for a whole bar, of any length.



A dotted half note (dotted minim) and a dotted half note (dotted minim) rest.



A half note (minim) and a half note (minim) rest.



A quarter note (crotchet) and a quarter note (crotchet) rest.

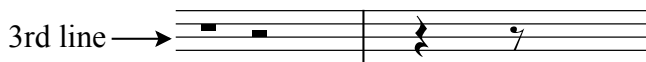


An eighth note (quaver) and a quarter note (crotchet) rest.

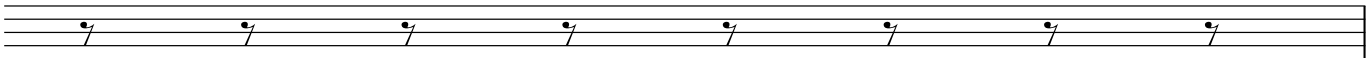


Hints:

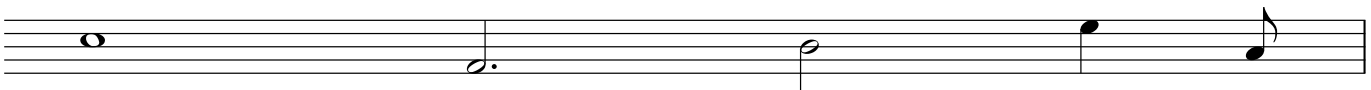
- \* Draw half note (minim) rests sitting on the 3rd staff line.
- \* Draw bar rests hanging down from the 4th line.
- \* Draw quarter note (crotchet) rests from half way into the bottom space to halfway into the top space.
- \* Draw eighth note (quaver) rests touching the 2nd line and nearly up to the 4th line.



1. Trace these eighth note (quaver) rests.



2. Draw the matching rest after each note.



3. Draw 3 rests of each of the 5 lengths shown:

