

Draw Rests I

A note tells how long a musical sound should last.
There are also rests, to tell how long a silence should last.

There is a half note (minim) and a half note (minim) rest.

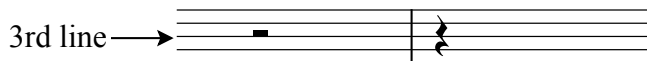


There is a quarter note (crotchet) and a quarter note (crotchet) rest.



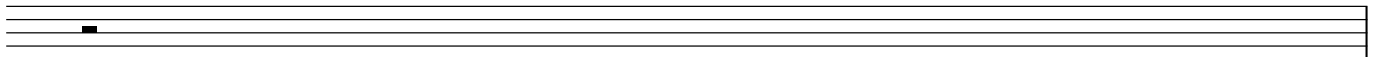
When you draw a half note (minim) rest, you draw it sitting on the third staff line.
Notice that it doesn't fill the whole space, as a note does.

A quarter note (crotchet) rest goes from half way into the bottom space to halfway into the top space.



A half note (minim) rest is easy to draw - it is a filled in box.

1. Try drawing 10 half note (minim) rests here, matching the model:



We draw quarter note (crotchet) rests differently by hand than you see in published music, usually with a line, something like this:



2. Trace these quarter note (crotchet) rests.



3. Now draw ten quarter note (crotchet) rests in the staff, placing them properly.
Rests should match the criteria mentioned on this page.

